



# Pure Sine Wave Power Inverter

New Energy Changes Our Life

[www.provistahk.com](http://www.provistahk.com)



**ProVista Technology International Ltd.**  
[www.provistahk.com](http://www.provistahk.com)    [www.ecoboxx.net](http://www.ecoboxx.net)  
HEAD OFFICE : Unit J, 33/F, COS Centre, 56 Tsun Yip Street, Kwun Tong, Kowloon, Hong Kong  
Tel: 852-2202 2800 Fax: 852-2202 2833 sales@provistahk.com  
FACTORY: Prottronic Industrial Park, Xiangxi Village, Shipai Town, Dongguan, Guangdong, China



TSW 092019

# About Us

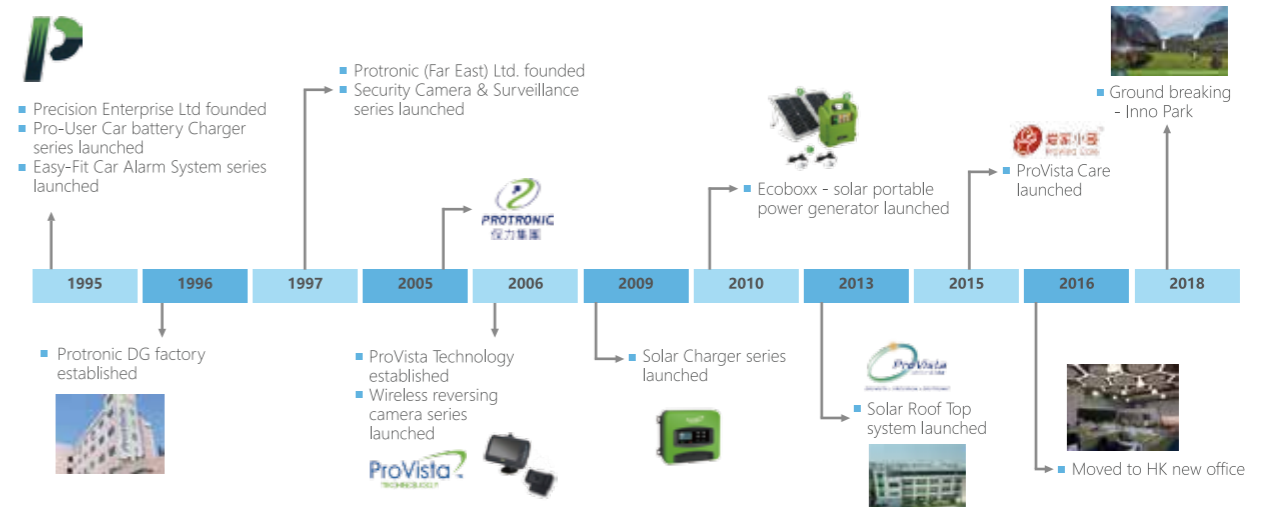
ProVista Group is a Hong Kong based electronic company with strong R&D, Engineering and Manufacturing capacity in electronic products including power and energy products, automotive electronics and security products since 1995.



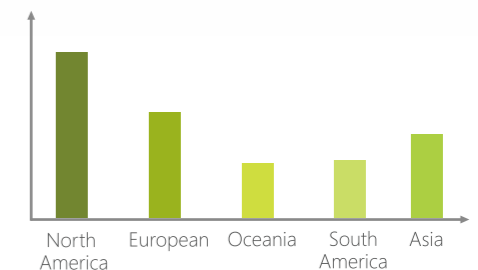
ProVista Inno Park will become the first international innovation technology & creative industry park in Dongguan Songshan Lake

Over the years, ProVista has rolled out hundreds of different products and models, and some of these products have won prizes in different competitions. We pride ourselves on the achievements of our R&D Department on products development, the efforts of our Marketing colleagues in exploring new opportunities, the dedications of our production team to quality and services, as well as the Group's commitment to customers and suppliers. We believe as ever that these are the key elements to the strong growth and remarkable performance of ProVista Group.

## Milestone



## Global Presence



# Power Inverter



## The Superior Power of New PSW Power Inverter Series

ProVista PSW Inverters are the best choice for appliances that demand a pure source of AC power. The basic and premium series will run most of everything in your RV or cottage and still have pure power for sensitive loads. Both feature a full overload protection and Stackable Inverter



Basic Series

- New generation pure sine wave inverter
- 12V 1000/1500/2000/3000W power inverter
- Higher efficiency (90% ~92%), high power density
- Rugged Aluminum Shell High surge power
- Suitable for tailgating, remote and heavy duty power tools



Premium Series

- New parallelable pure sine wave inverter
- 12, 24V 2000/3000W
- Output parallelable inverter up to 12KW/18KW
- Higher efficiency (88%~90%)
- Professional Housing design with LCD display
- Built-in ATS & AC Battery Charger
- Suitable for heavy duty power tools

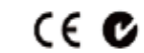
# Power Inverter



PIT 1000/1500/2000/3000

## Basic Series

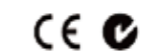
- 12V DC to AC
- Range 1000/1500/2000/3000W
- Durable Aluminum Shell
- LED Power Indicator
- Power Fan Cooling Control
- Input/Under Voltage/Over Voltage Protections
- Output Short Circuit/Overload/Over Temperature Protections
- Two USB 5V Output
- Options : On/Off Remote Control
- Accessories : Battery Cable



PIU2000/3000

## Premium Series

- Range 2000 / 3000W
- Professional Housing Design
- Module Current : 15A
- Max. Input Power : 225Wp
- System Voltage : 12V / 24V
- 3 LED for Showing Operation SOC, Fault.
- Built-in ATS and Battery Charger



# Power Inverter

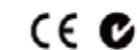


## Pure Sine Wave Power Inverter 12V 200/400/600/1000/1500/2200W

The ProVista's PI Series offers affordable, quality pure sine wave inverter solution for both recreational and commercial applications. Available in 5 models with high surge capability, the ProVista's PI Series provides the necessary current to startup demanding electrical loads. In addition to dual GFCI AC receptacles, the ProVista's PI Series include an USB connection for providing power to most USB chargeable devices. The ProVista PI Series offers many safety features not found in similar inverters. When equipped with a remote control, the ProVista's PI Series has the ability to provide the inverter's running status such as voltage, current, power & battery level and display in them in the built-in LCD on the remote control. The compact, easy-to-use and easy-to-install design of the ProVista's PI Series makes it ideal for use in commercial truck, RV and marine applications. With Pure Sine Wave output, the ProVista's PI Series can provide power for all types of electrical loads including, variable speed power tools, advanced electrical appliances, microwaves and much more.



- 12V DC to AC
- Power version 200W/400W/600W/1000W/1500W/2200W
- Pure Sine Wave voltage and current
- Excellent overload capabilities
- Durable Aluminum housing
- Power saving mode to save energy
- Total Harmonic distortion <3%
- High max eff. 89%
- Input/under voltage/over voltage protections
- Output short circuit/overload/over temperature protections
- Temperature fan cooling control
- LCD digital display(Voltage, current, Power and battery level)
- 5V USB port
- Optional LCD remote control (On/off, Voltage, current, Power and battery level)
- Optional from PV solar panel input



# Pure Sine Wave Inverter

## Solar Series

600W / 1000W / 1500W / 2200W



### Application

Back-up and emergency power for small home and office system Built-in charger controller to charge battery by solar PV and DC source

Model No.	Euro Version US Version	PIP600-230 PIP600-120	PIP1000-230 PIP1000-120	PIP1500-230 PIP1500-120	PIP2200-230 PIP2200-120
<b>Dimension</b>	(L X W X H), mm	 297x204x102	 379x204x102	 429x204x102	 429x204x102
<b>Output</b>	Output Voltage	230V/120V			
	Maximum Output Current	2.6A/5A	4.35A/8.33A	6.52A/12.5A	9.5A/18.5A
	Output Frequency	50/60Hz			
	Type of Output Waveform	Pure Sine wave			
	Total Harmonic Distortion of output Waveform	≤3%			
	Continous Output Power (At Power Factor = 1)	600W	1000W	1500W	2200W
	Surge Output Power (At Power Factor = 1;<0.5s)	1200W	2000W	3000W	4400W
	Peak Efficiency	89%/88%	89%/88%	89%/88%	92%/88%
	USB Output	5V/1A/2A			
	AC Output Connections	VDE,BS,SAA / Dual GFCI			
<b>Input</b>	Nominal DC Input Voltage	12V	12V	12V	24V
	DC Input Voltage Range	10.5V-15.3V	10.5V-15.3V	10.5V-15.3V	21V-30V
	Maximum Input Current	60A	100A	150A	120A
	DC Input Current At No Load	≤750mA	≤1A	≤1A	≤0.5A
	DC Input Connections	Knob Termonals			
<b>Display</b>	LCD 	Power, Battery Level, Voltage, Current			
<b>Protections</b>	Low DC Input Voltage Alarm	10.5V			
	Low DC Input Voltage Shutdown	10.5V			
	High DC Input Voltage Shutdown	15.3V			
	Short Circuit Shutdown	YES			
	Overload Stutdown	660W	1100W	1650W	2500W
	Over Temperature Shutdown	YES			
	Reverse Polarity On DC Input Side	By Fuse			
<b>Solar Charger</b>	Charging Current	20A PWM	30A PWM	30A PWM	30A PWM
	System Voltage	16-45V	16-45V	16-45V	32-45V
	Max. Input Ocv	45V			
	Max. Input Current	20A	30A	30A	30A
<b>Remote</b>	Wired Remote Control (Optional) 	YES			
<b>Cooling</b>	Forced Air Cooling	Temperature & Load Controlled Fan			
<b>Compliance</b>	Safety	CE-LVD(EN60950), AS/NZSS4763:2011			
	EMI/EMC	CE-EMC,C-Tick			
<b>Environment</b>	Operating Temperature Range	-20 C ~40 C			
<b>Weights</b>	Kg	2.7	3.8	4.7	4.7
	Lbs	6.048	8.512	10.528	10.528
<b>Other</b>	Warranty	1			
	Applications	RV, Yacht, Caravan, Truck Portable Electrical Appliances...etc			

# Pure Sine Wave Inverter Automotive Series

600W / 1000W / 1500W / 2200W



## Application



Model No.	Euro Version US Version	PIK600-230 PIK600-120	PIK1000-230 PIK1000-120	PIK1500-230 PIK1500-120	PIK2200-230 PIK2200-120
<b>Dimension</b>	(L X W X H), mm	 297x204x102	 379x204x102	 429x204x102	 429x204x102
<b>Output</b>	Output Voltage	230V/120V			
	Maximum Output Current	2.6A/5A	4.35A/8.33A	6.52A/12.5A	9.5A/18.5A
	Output Frequency	50/60Hz			
	Type of Output Waveform	Pure Sine wave			
	Total Harmonic Distortion of output Waveform	≤3%			
	Continous Output Power (At Power Factor = 1)	600W	1000W	1500W	2200W
	Surge Output Power (At Power Factor = 1;<0.5s)	1200W	2000W	3000W	4400W
	Peak Efficiency	89%/88%	89%/88%	89%/88%	92%/88%
	USB Output	5V/1A/2A			
	AC Output Connections	VDE,BS,SAA / Dual GFCI			
<b>Input</b>	Nominal DC Input Voltage	12V	12V	12V	24V
	DC Input Voltage Range	10.5V-15.3V	10.5V-15.3V	10.5V-15.3V	21V-30V
	Maximum Input Current	60A	100A	150A	120A
	DC Input Current At No Load	≤750mA	≤1A	≤1A	≤0.5A
	DC Input Connections	Knob Termonals			
<b>Display</b>	LCD 	Power, Battery Level, Voltage, Current			
<b>Protections</b>	Low DC Input Voltage Alarm	10.5V			
	Low DC Input Voltage Shutdown	10.5V			
	High DC Input Voltage Shutdown	15.3V			
	Short Circuit Shutdown	YES			
	Overload Stutdown	660W	1100W	1650W	2500W
	Over Temperature Shutdown	YES			
	Reverse Polarity On DC Input Side	By Fuse			
<b>Remote</b>	Wired Remote Control (Optional) 	YES			
<b>Cooling</b>	Forced Air Cooling	Temperature & Load Controlled Fan			
<b>Compliance</b>	Safety	CE-LVD(EN60950), AS/NZS4763:2011			
	EMI/EMC	CE-EMC,C-Tick			
<b>Environment</b>	Operating Temperature Range	-20 C ~40 C			
<b>Weights</b>	Kg	2.7	3.8	4.7	4.7
	Lbs	6.048	8.512	10.528	10.528
<b>Other</b>	Warranty	1			
	Applications	RV, Yacht, Caravan, Truck Portable Electrical Appliances...etc			

# Pure Sine Wave Inverter Automotive Series

200W / 400W



## Application

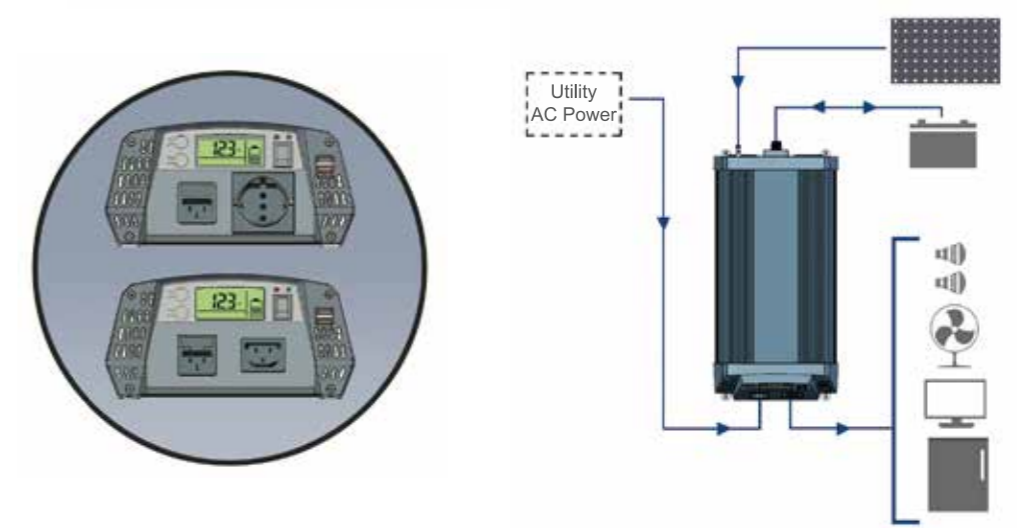
Model No.	PIK200-230	PIK400-230
<b>Dimension</b>	(L X W X H), mm	
	 188x100x60	 213x100x60
<b>Output</b>	230V	
	Maximum Output Current	0.87A / 1.74A
	Output Frequency	50Hz
	Type of Output Waveform	Pure Sine wave
	Total Harmonic Distortion of output Waveform	≤3%
	Continuous Output Power (At Power Factor = 1)	200W / 400W
	Surge Output Power (At Power Factor = 1; <0.5s)	400W / 800W
	Peak Efficiency	89% / 88%
	USB Output	5V/2.1A
	AC Output Connections	VDE,BS,SAA
<b>Input</b>	12V	
	DC Input Voltage Range	10.5V-15.3V
	Maximum Input Current	20A / 40A
	DC Input Current At No Load	≤750mA / ≤1A
	DC Input Connections	Knob Terminals
<b>Display</b>	LCD	NA
<b>Protections</b>	Low DC Input Voltage Alarm	10.5V
	Low DC Input Voltage Shutdown	10.5V
	High DC Input Voltage Shutdown	15.3V
	Short Circuit Shutdown	YES
	Overload Shutdown	270W / 450W
	Over Temperature Shutdown	YES
	Reverse Polarity On DC Input Side	By Fuse
<b>Remote</b>	Wired Remote Control (Optional)	NO
<b>Cooling</b>	Forced Air Cooling	Temperature & Load Controlled Fan
<b>Compliance</b>	Safety	CE-LVD(EN60950),AS/NZS4763:2011
	EMI/EMC	CE-EMC,C-Tick
<b>Environment</b>	Operating Temperature Range	-20 C~40 C
<b>Weights</b>	Kg	0.735 / 0.887
	Lbs	1.646 / 1.987
<b>Other</b>	Warranty	1
	Applications	RV, Yacht, Caravan, Truck Portable Electrical Appliances...etc



# Inverter + Transfer Switch



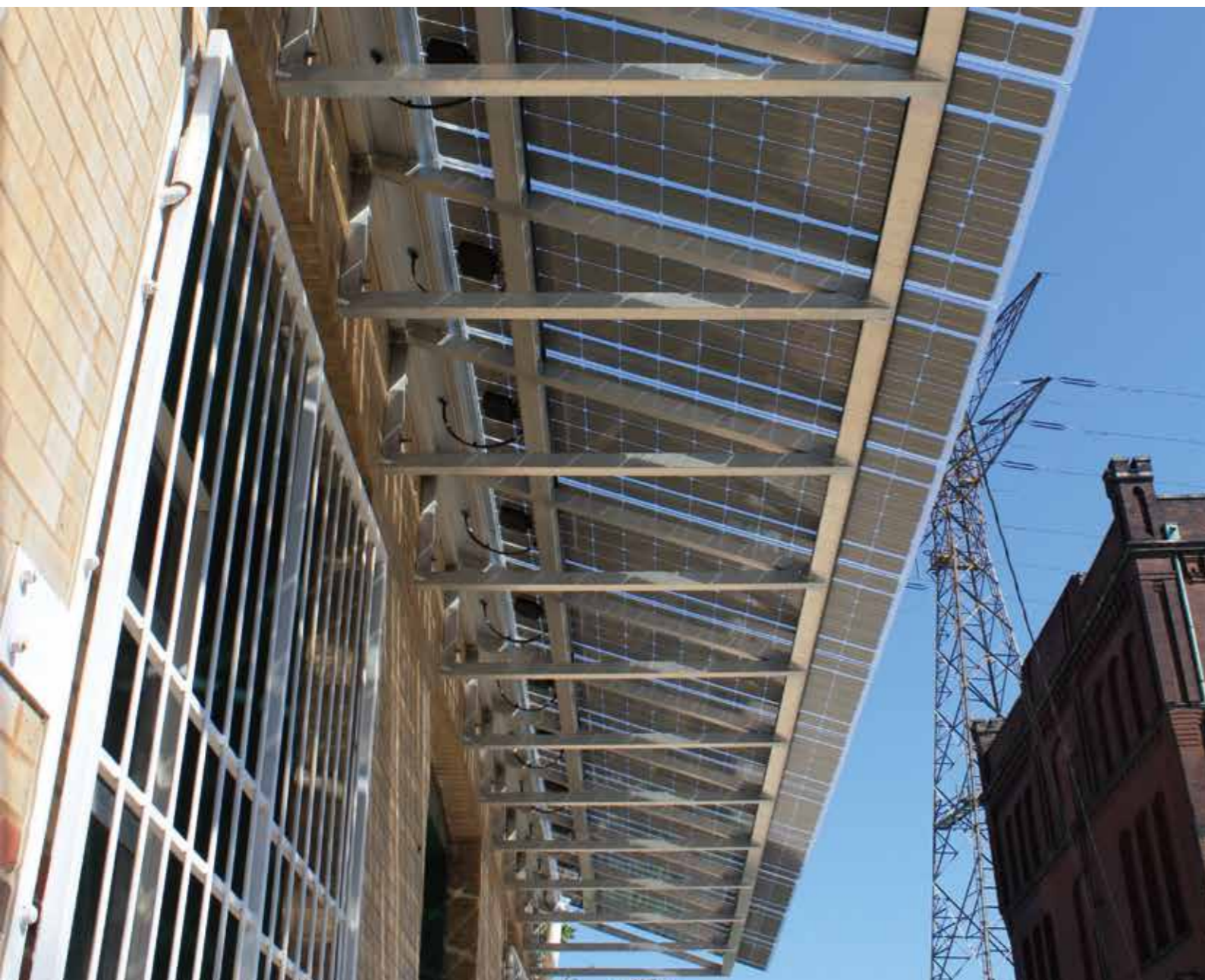
Built-in Transfer Switch, allows for Automatic Utility/Generator AC Power transfer to Inverter Power



- 20ms transfer time when going from Grid to inverter

# Pure Sine Wave Inverter with built-in Transfer Switch

1000W / 1500W



## Application

Built-in Transfer Switch, allows for Automatic Utility / Generator AC Power transfer to Inverter Power

Model No.	Euro Version	PIPTS1000-230	PIPTS1500-230
<b>Dimension</b>	(L X W X H), mm	 379x204x102	 429x204x102
<b>Output</b>	Output Voltage	230V/120V	
	Maximum Output Current	4.35A/8.33A	6.52A/12.5A
	Output Frequency	50/60Hz	
	Type of Output Waveform	Pure Sine wave	
	Total Harmonic Distortion of output Waveform	≤3%	
	Continuous Output Power (At Power Factor = 1)	1000W	1500W
	Surge Output Power (At Power Factor = 1;<0.5s)	2000W	3000W
	Peak Efficiency	89%/88%	
	USB Output	5V/1A/2A	
	AC Output Connections	VDE,BS,SA/Dual GFCI	
<b>Input</b>	Nominal DC Input Voltage	12V	
	DC Input Voltage Range	10.5V-15.3V	
	Maximum Input Current	100A	150A
	DC Input Current At No Load	≤1A	≤1A
	DC Input Connections	Knob Terminals	
	AC Input	230V	
	Transfer Time	< 20ms	
<b>Display</b>	LCD 	Power,Battery Level,Voltage,Current	
<b>Protections</b>	Low DC Input Voltage Alarm	10.5V	
	Low DC Input Voltage Shutdown	10.5V	
	High DC Input Voltage Shutdown	15.3V	
	Short Circuit Shutdown	YES	
	Overload Shutdown	1100W	1650W
	Over Temperature Shutdown	YES	
	Reverse Polarity On DC Input Side	By Fuse	
<b>Solar Charger</b>	Charging Current	30A PWM	30A PWM
	System Voltage	16-45V	
	Max. Input Ocv	45V	
	Max. Input Current	30A	30A
<b>Remote</b>	Wired Remote Control (Optional) 	YES	
<b>Cooling</b>	Forced Air Cooling	Temperature & Load Controlled Fan	
<b>Compliance</b>	Safety	CE-LVD(EN60950),AS/NZS4763:2011	
	EMI/EMC	CE-EMC,C-Tick	
<b>Environment</b>	Operating Temperature Range	-20 C ~40 C	
<b>Weights</b>	Kg	3.8	4.7
	Lbs	8.512	10.528
<b>Others</b>	Warranty	1	
	Applications	RV,Yacht,Caravan,Truck,Portable Electrical Appliances...etc	